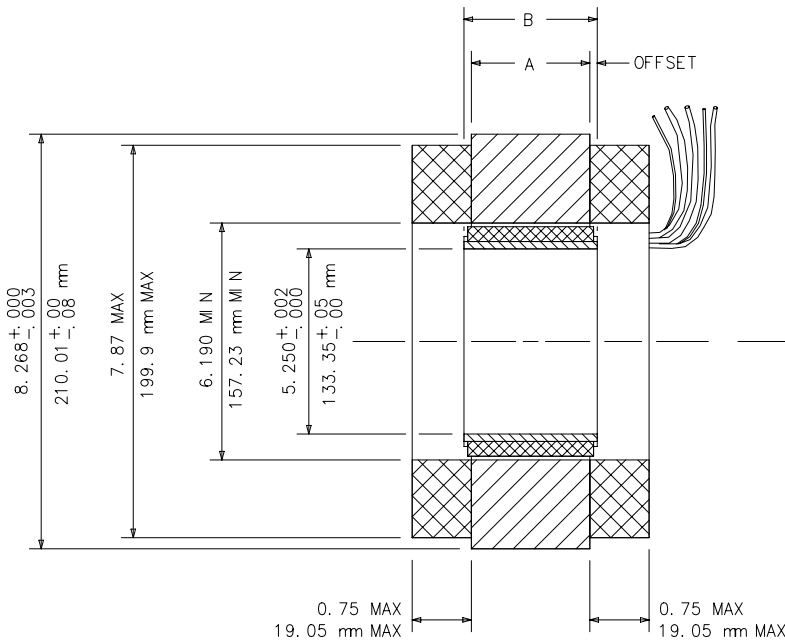
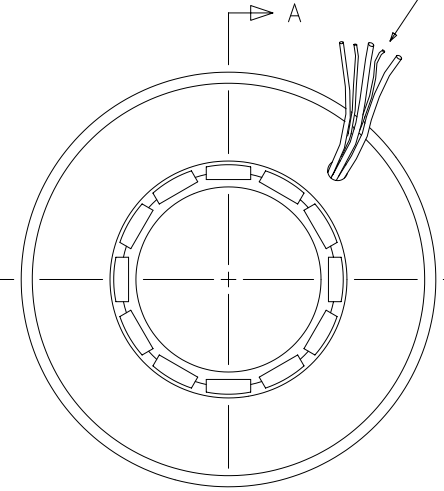


MODEL NUMBER	STACK LENGTH DI M. "A"		ROTOR LENGTH DI M. "B"	
	in ±.025 mm ±0.64	in ±.010 mm ±0.25	in ±.005 mm ±0.13	in ±.005 mm ±0.13
B21-13	0.500	12.70	0.505	12.83
B21-25	1.000	25.40	1.010	25.65
B21-38	1.500	38.10	1.515	38.48
B21-51	2.000	50.80	2.020	51.31
B21-64	2.500	63.50	2.525	64.14
B21-76	3.000	76.20	3.030	76.96
B21-89	3.500	88.90	3.535	89.79
B21-102	4.000	101.60	4.040	102.62
B21-114	4.500	114.30	4.545	115.44
B21-127	5.000	127.00	5.050	128.27
B21-140	5.500	139.70	5.555	141.10
B21-152	6.000	152.40	6.060	153.92
B21-165	6.500	165.10	6.565	166.75
B21-178	7.000	177.80	7.070	179.58
B21-191	7.500	190.50	7.575	192.41
B21-203	8.000	203.20	8.080	205.23
B21-216	8.500	215.90	8.585	218.06
B21-229	9.000	228.60	9.090	230.89
B21-241	9.500	241.30	9.595	243.71
B21-254	10.000	254.00	10.100	256.54
B21-267	10.500	266.70	10.605	269.37
B21-279	11.000	279.40	11.110	282.19
B21-292	11.500	292.10	11.615	295.02
B21-305	12.000	304.80	12.120	307.85

OFFSET SHOULD EQUAL  $(B-A)/2 \pm 0.025$  in  
 ROTOR SHOULD BE MOUNTED CONCENTRIC TO  
 WITHIN 0.004 WITH RESPECT TO STATOR OD



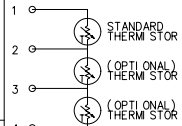
LEAD LENGTH 16 in MIN  
 MOTOR WIRE GAUGE  
 DETERMINED BY WINDING



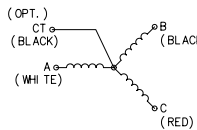
MOTOR DIMENSIONS SHOWN APPLY ONLY IN  
 A MACHINING OR TEST FIXTURE AND NOT  
 IN THE FREE OR UNRESTRAINED STATE

DETAILS OF MOTOR SHOWN ARE GENERIC  
 ACTUAL MOTOR MAY DIFFER IN APPEARANCE

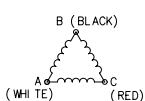
ONE THERMISTOR IS STANDARD



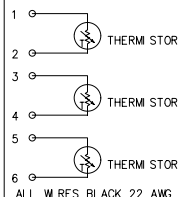
WYE CONFIGURATION



DELTA CONFIGURATION



OPTIONAL 3 THERMISTOR CONFIG.



MOTOR ROTATION WILL BE IN THE  
 CLOCKWISE DIRECTION AS VIEWED  
 FROM THE LEAD SIDE WHEN  
 ENERGIZED IN THE SEQUENCE  
 WHITE-BLACK-RED

CONSULT FACTORY FOR  
 SIX-LEAD CONFIGURATION

REV	DESCRIPTION	DATE	APPROVED
REVISIONS			
UNLESS OTHERWISE SPECIFIED DIMENSIONS ARE IN INCHES. TOLERANCES ARE:			
FRACTIONS R1/64	DECIMALS .XX = R.01 .XXX = R.005	ANGLES R1°	
MATERIAL		SIZE B	SCALE NONE
FINISH		CHKD DATE:	DWG DATE: LDB 3-21-95
DO NOT SCALE DRAWING		DWC NO. 2011194	REV. SHEET 1 OF 1

**MOTION CONTROL SYSTEMS, INC.**  
 Dublin, Virginia 24084

FRAMELESS MOTOR PHYSICAL SPECIFICATION  
 B21-XXX-18 VARNISHED WINDINGS  
 (5.25 ID)