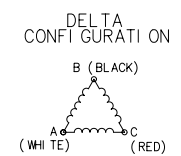
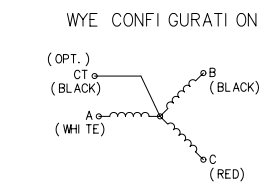
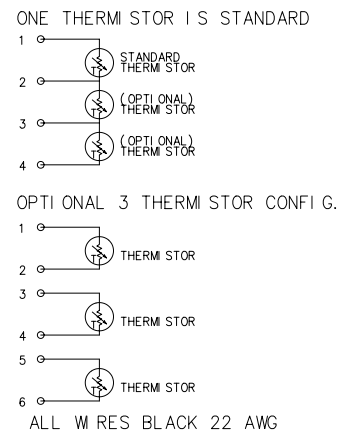
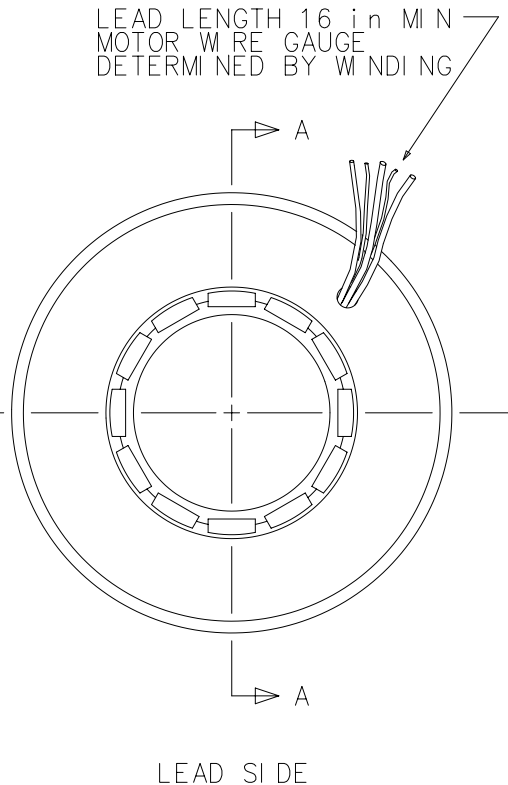
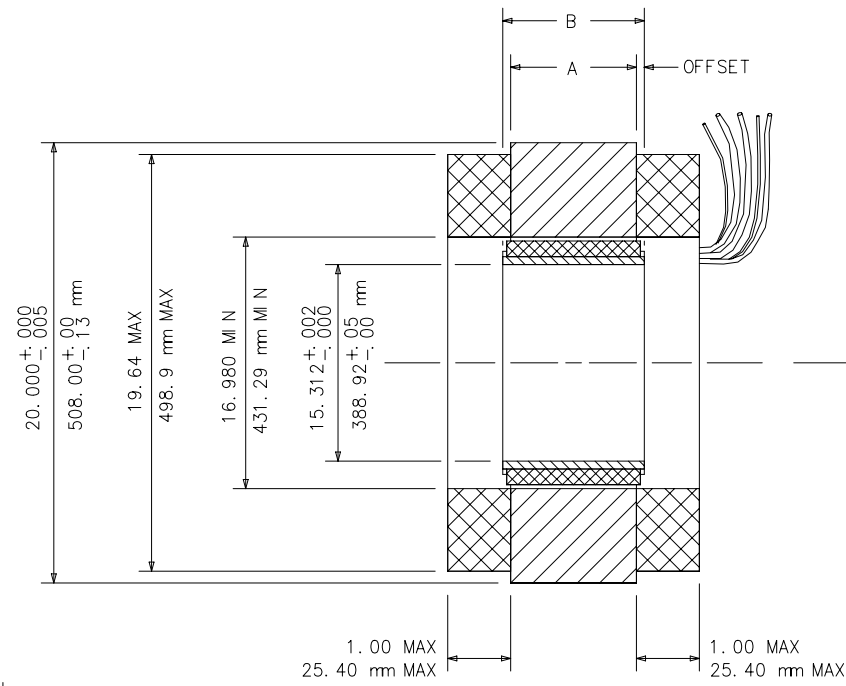


MODEL NUMBER	STACK LENGTH "A"		ROTOR LENGTH "B"	
	in $\pm .025$ - .010	mm ± 0.64 - 0.25	in $\pm .005$ - .000	mm ± 0.13 - 0.00
B51-13	0.500	12.70	0.505	12.83
B51-25	1.000	25.40	1.010	25.65
B51-38	1.500	38.10	1.515	38.48
B51-51	2.000	50.80	2.020	51.31
B51-64	2.500	63.50	2.525	64.14
B51-76	3.000	76.20	3.030	76.96
B51-89	3.500	88.90	3.535	89.79
B51-102	4.000	101.60	4.040	102.62
B51-114	4.500	114.30	4.545	115.44
B51-127	5.000	127.00	5.050	128.27
B51-140	5.500	139.70	5.555	141.10
B51-152	6.000	152.40	6.060	153.92
B51-165	6.500	165.10	6.565	166.75
B51-178	7.000	177.80	7.070	179.58
B51-191	7.500	190.50	7.575	192.41
B51-203	8.000	203.20	8.080	205.23
B51-216	8.500	215.90	8.585	218.06
B51-229	9.000	228.60	9.090	230.89
B51-241	9.500	241.30	9.595	243.71
B51-254	10.000	254.00	10.100	256.54
B51-267	10.500	266.70	10.605	269.37
B51-279	11.000	279.40	11.110	282.19
B51-292	11.500	292.10	11.615	295.02
B51-305	12.000	304.80	12.120	307.85

OFFSET SHOULD EQUAL (B-A)/2 ± 0.025 in
 ROTOR SHOULD BE MOUNTED CONCENTRIC TO WITHIN 0.004 WITH RESPECT TO STATOR OD
 MOTOR DIMENSIONS SHOWN APPLY ONLY IN A MACHINING OR TEST FIXTURE AND NOT IN THE FREE OR UNRESTRAINED STATE
 DETAILS OF MOTOR SHOWN ARE GENERIC ACTUAL MOTOR MAY DIFFER IN APPEARANCE

REVISIONS			
REV	DESCRIPTION	DATE	APPROVED
B	REDRAWN TO NEW STANDARD	9-17-91	NH
C	REQ #129 CORRECT mm TOLERANCE	12-22-92	NH
D	ADDED NEW CHART AND NOTES		



MOTOR ROTATI ON WILL BE IN THE CLOCKW SE DI RECTI ON AS VI EWED FROM THE LEAD SI DE WHEN ENERGI ZED IN THE SEQUENCE WHI TE-BLACK-RED

CONSULT FACTORY FOR SI X-LEAD CONFI GURATI ON

SECTI ON AA

UNLESS OTHERWISE SPECIFIED DIMENSIONS ARE IN INCHES. TOLERANCES ARE:

FRACTIONS f1/64	DECIMALS .XX = f.01 .XXX = f.005	ANGLES f1°
MATERIAL		
FINISH		
DO NOT SCALE DRAWING		

MOTION CONTROL SYSTEMS, INC. Dublin, Virginia 24084			
FRAMELESS MOTOR PHYSI CAL SPECI FI CATI ON B51-XXX-38 VARNI SHED W NDI NGS (15.312 I D)			
SIZE B	SCALE NONE	DWG NO. 2012024	REV. D
CHKD. DATE :	DWG DATE : TD 9-17-91	SHEET	1 OF 1