

MODEL NUMBER	STACK LENGTH DI M. "A"		ROTOR LENGTH DI M. "B"	
	in ±.010	mm ±0.25	in ±.005	mm ±0.13
B31-13	0.500	12.70	0.505	12.83
B31-25	1.000	25.40	1.010	25.65
B31-38	1.500	38.10	1.515	38.48
B31-51	2.000	50.80	2.020	51.31
B31-64	2.500	63.50	2.525	64.14
B31-76	3.000	76.20	3.030	76.96
B31-89	3.500	88.90	3.535	89.79
B31-102	4.000	101.60	4.040	102.62
B31-114	4.500	114.30	4.545	115.44
B31-127	5.000	127.00	5.050	128.27
B31-140	5.500	139.70	5.555	141.10
B31-152	6.000	152.40	6.060	153.92
B31-165	6.500	165.10	6.565	166.75
B31-178	7.000	177.80	7.070	179.58
B31-191	7.500	190.50	7.575	192.41
B31-203	8.000	203.20	8.080	205.23
B31-216	8.500	215.90	8.585	218.06
B31-229	9.000	228.60	9.090	230.89
B31-241	9.500	241.30	9.595	243.71
B31-254	10.000	254.00	10.100	256.54
B31-267	10.500	266.70	10.605	269.37
B31-279	11.000	279.40	11.110	282.19
B31-292	11.500	292.10	11.615	295.02
B31-305	12.000	304.80	12.120	307.85

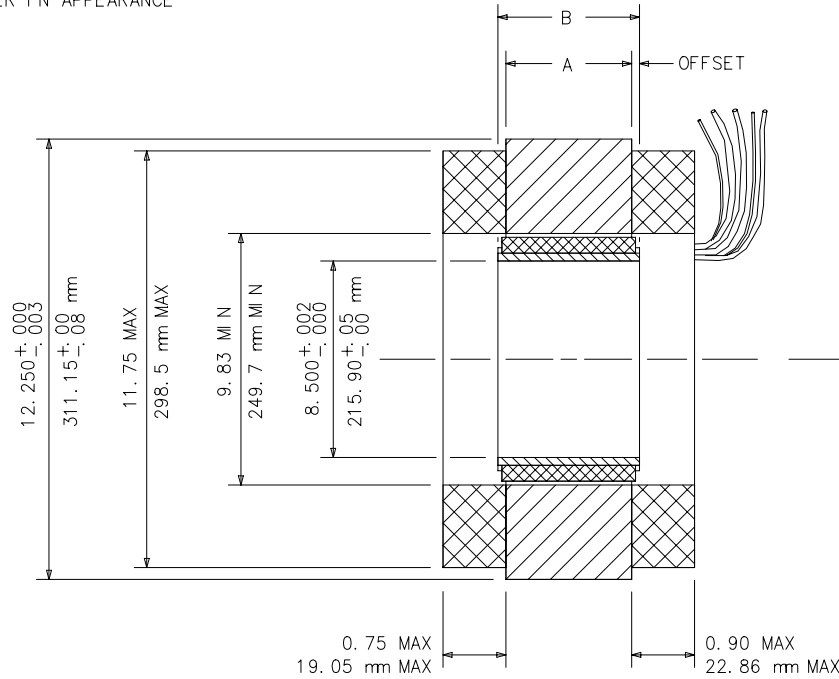
OFFSET SHOULD EQUAL $(B-A)/2 \pm 0.025$ in

ROTOR SHOULD BE MOUNTED CONCENTRIC TO WITHIN 0.004 WITH RESPECT TO STATOR OD

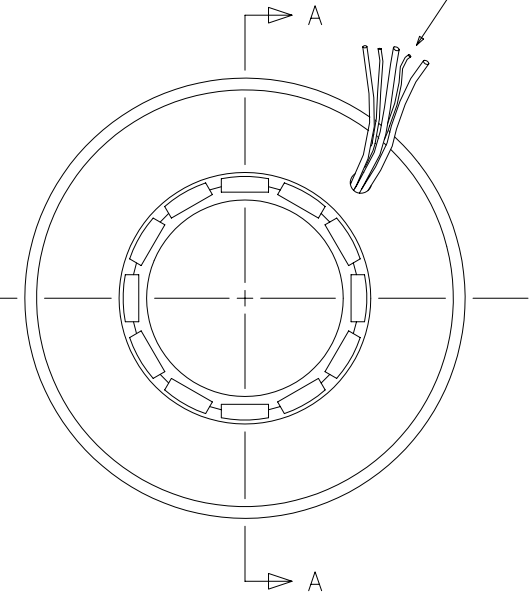
MOTOR DIMENSIONS SHOWN APPLY ONLY IN A MACHINING OR TEST FIXTURE AND NOT IN THE FREE OR UNRESTRAINED STATE

DETAILS OF MOTOR SHOWN ARE GENERIC. ACTUAL MOTOR MAY DIFFER IN APPEARANCE

REVISIONS			
REV	DESCRIPTION	DATE	APPROVED
A	ADDED NEW CHART AND NOTES		



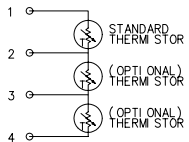
LEAD LENGTH 16 in MIN
MOTOR WIRE GAUGE
DETERMINED BY WINDING



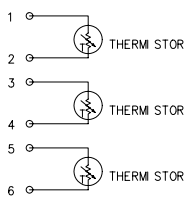
SECTION AA

LEAD SIDE

ONE THERMISTOR IS STANDARD

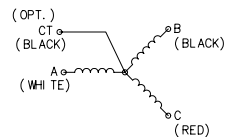


OPTIONAL 3 THERMISTOR CONFIG.

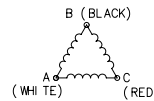


ALL WIRES BLACK 22 AWG

WYE CONFIGURATION



DELTA CONFIGURATION



MOTOR ROTATION WILL BE IN THE CLOCKWISE DIRECTION AS VIEWED FROM THE LEAD SIDE WHEN ENERGIZED IN THE SEQUENCE WHITE-BLACK-RED

CONSULT FACTORY FOR SIX-LEAD CONFIGURATION

UNLESS OTHERWISE SPECIFIED DIMENSIONS ARE IN INCHES. TOLERANCES ARE:		MOTION CONTROL SYSTEMS, INC. Dublin, Virginia 24084			
FRACTIONS f1/64	DECIMALS .XX = f.01 .XXX = f.005			ANGLES f1°	
MATERIAL		SIZE	SCALE	DWG. NO.	REV.
FINISH		B	NONE	2014024	A
DO NOT SCALE DRAWING		CHKD DATE: EEB 11-4-94	DWG DATE: TD 11-4-94	SHEET	1 OF 1

FRAMELESS MOTOR PHYSICAL SPECIFICATIONS
B31-XXX-28 VARNISHED WINDINGS
(8.500 I.D.)