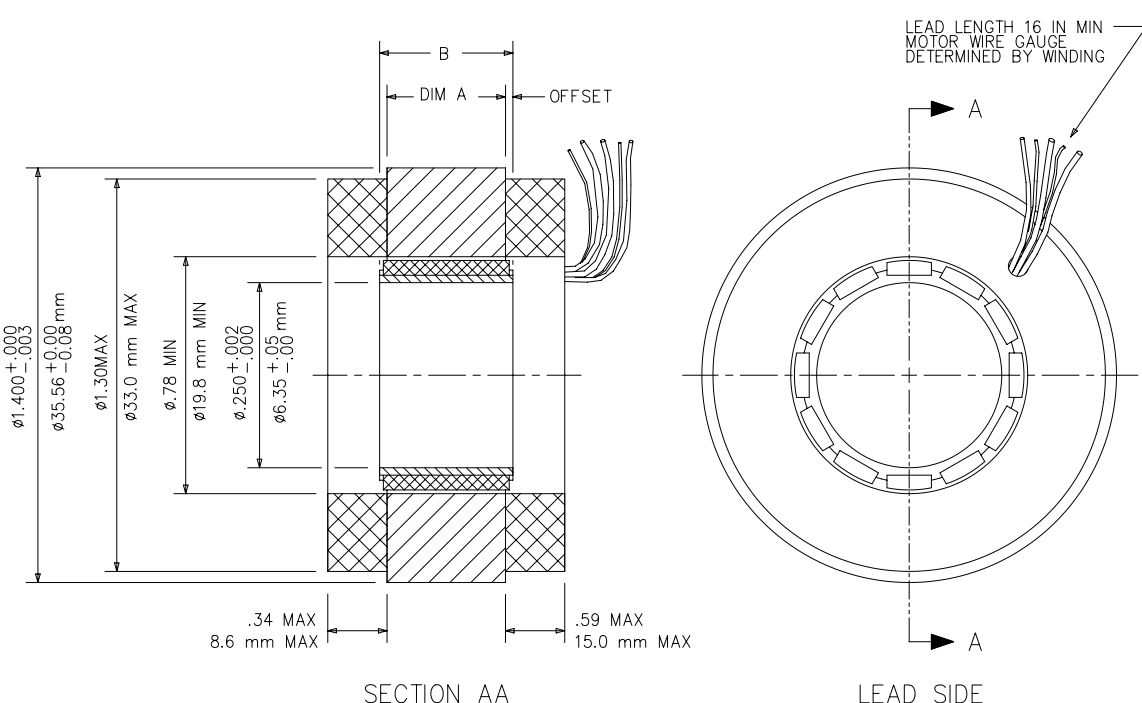


MODEL NUMBER	STACK LENGTH "A"		ROTOR LENGTH "B"	
	in $\pm .025$ $\pm .010$	mm $\pm .64$ $\pm .25$	in $\pm .005$ $\pm .13$	mm $\pm .13$ $\pm .00$
B04-06	.250	6.35	.255	6.48
B04-13	.500	12.70	.505	12.83
B04-25	1.000	25.40	1.010	25.65
B04-38	1.500	38.10	1.515	38.48
B04-51	2.000	50.80	2.020	51.31

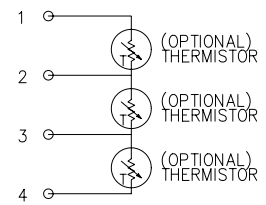
NOTES:

1. OFFSET SHOULD EQUAL (B-A)/2  $\pm .025$  in.
2. ROTOR SHOULD BE MOUNTED CONCENTRIC WITHIN .004 WITH RESPECT TO STATOR OD.
3. MOTOR DIMENSIONS SHOWN APPLY ONLY IN A MACHINING OR TEST FIXTURE AND NOT IN THE FREE OR UNRESTRAINED STATE.
4. DETAILS OF MOTOR SHOWN ARE GENERIC ACTUAL MOTOR MAY DIFFER IN APPEARANCE.
5. MOTOR ROTATION WILL BE IN THE CLOCKWISE DIRECTION AS VIEWED FROM THE LEAD SIDE WHEN ENERGIZED IN THE SEQUENCE WHITE-BLACK-RED.

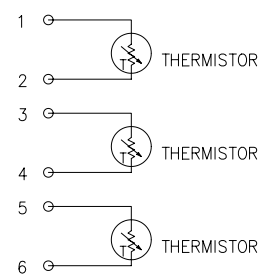
REVISIONS			
REV	DESCRIPTION	DATE	APPROVED



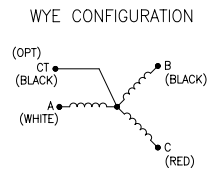
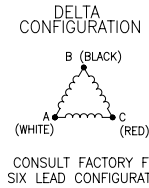
ONE THERMISTOR IS STANDARD



OPTIONAL 3 THERMISTOR CONFIG.



ALL WIRES BLACK 22 AWG



UNLESS OTHERWISE SPECIFIED DIMENSIONS ARE IN INCHES. TOLERANCES ARE:		
FRACTIONS $\pm 1/64$	DECIMALS .XX = $\pm .01$ .XXX = $\pm .005$	ANGLES $\pm 1^\circ$
MATERIAL	SIZE B	SCALE NONE
FINISH	DO NOT SCALE DRAWING	DWG NO. W2001084
CHKD DATE: EEB 12-12-01	DWG DATE: DC 12-12-01	REV. N/A
SHEET 1 OF 1		

MOTION CONTROL SYSTEMS, INC. New River, Virginia 24129			
FRAMELESS MOTOR PHYSICAL SPECIFICATION B04-XXX VARNISHED .250 ID			
SIZE B	SCALE NONE	DWG NO. W2001084	REV. N/A
CHKD DATE: EEB 12-12-01	DWG DATE: DC 12-12-01	SHEET 1 OF 1	